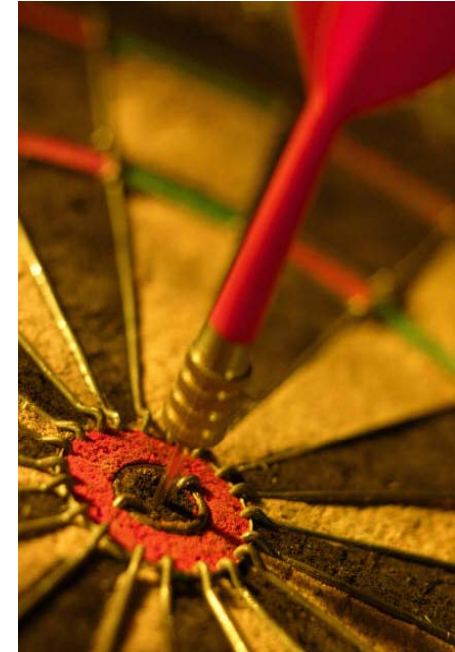




**AIM – The most advanced
metering solution for AMM**

Why solution from Landis+Gyr Enermet?

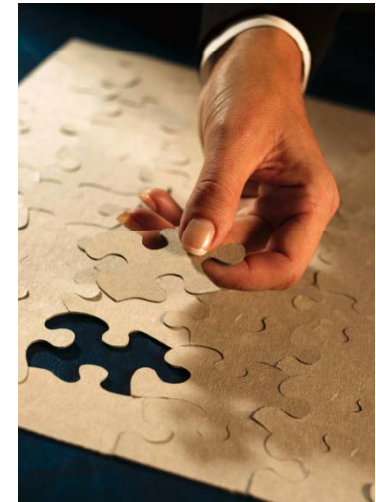
- + Most committed and experienced AMM solution provider
 - Our main focus area is metering business
 - Well recognised and financial stable company
 - Largest relevant engineering capacity in the industry
 - Over 20 years experience in AMM solutions business
 - Hundreds of AMM systems in commercial use
 - Millions of AMM meters sold
- + Local presence with global competence
 - Enables rapid solution adaptations to local business environment
 - Strong position in active AMM markets
 - Customers can benefit from our wide global experience and best practices & processes



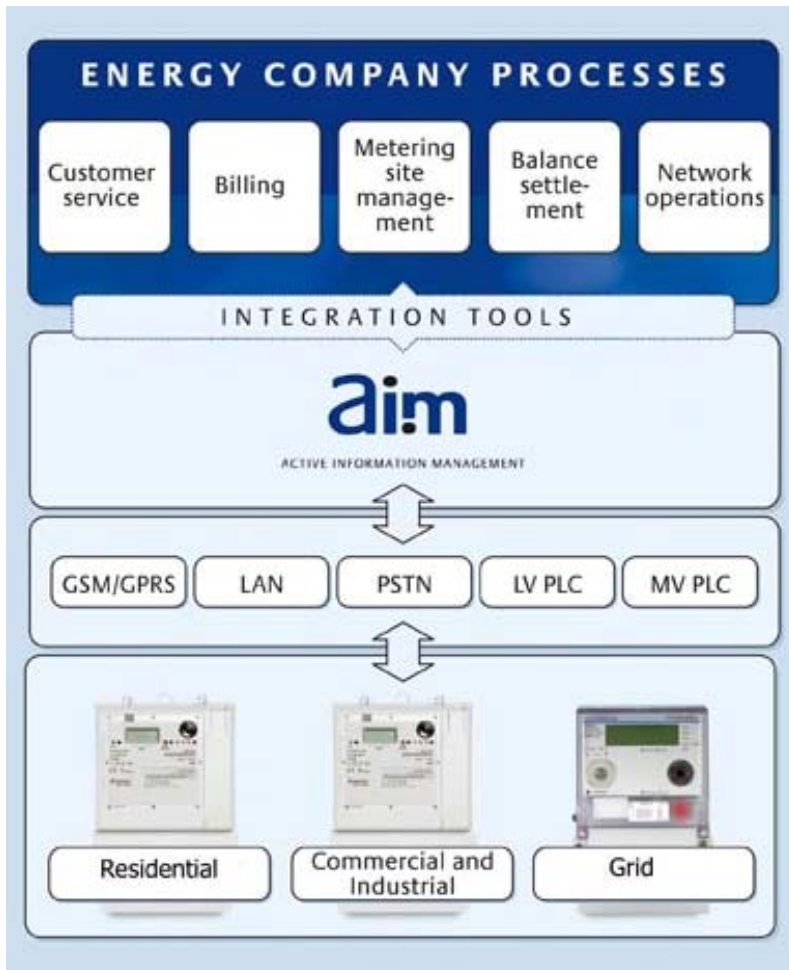
Our solution improves key customer business processes

Better customer business processes with AIM solution:

- + Right metering information in correct time for Balance Settlement
- + Accurate billing and efficient debt collection
- + Contract management with less manual work
- + Value added services for customers (load controls, alarms)
- + Delivery monitoring on metering point level (power quality, power cut alarm)
- + Reliable installation information and easy communication channel management



Integrated and optimized End-to-end Metering Solution



Seamless system integration

Unique integration platform (AIMIA) for creating fully functional two-way integrated metering infrastructure for energy companies business systems.

State-of-the-art Advanced AMM

Fourth generation of system with superior functionality to serve all needed energy company processes. Highly focused on large-scale operation.

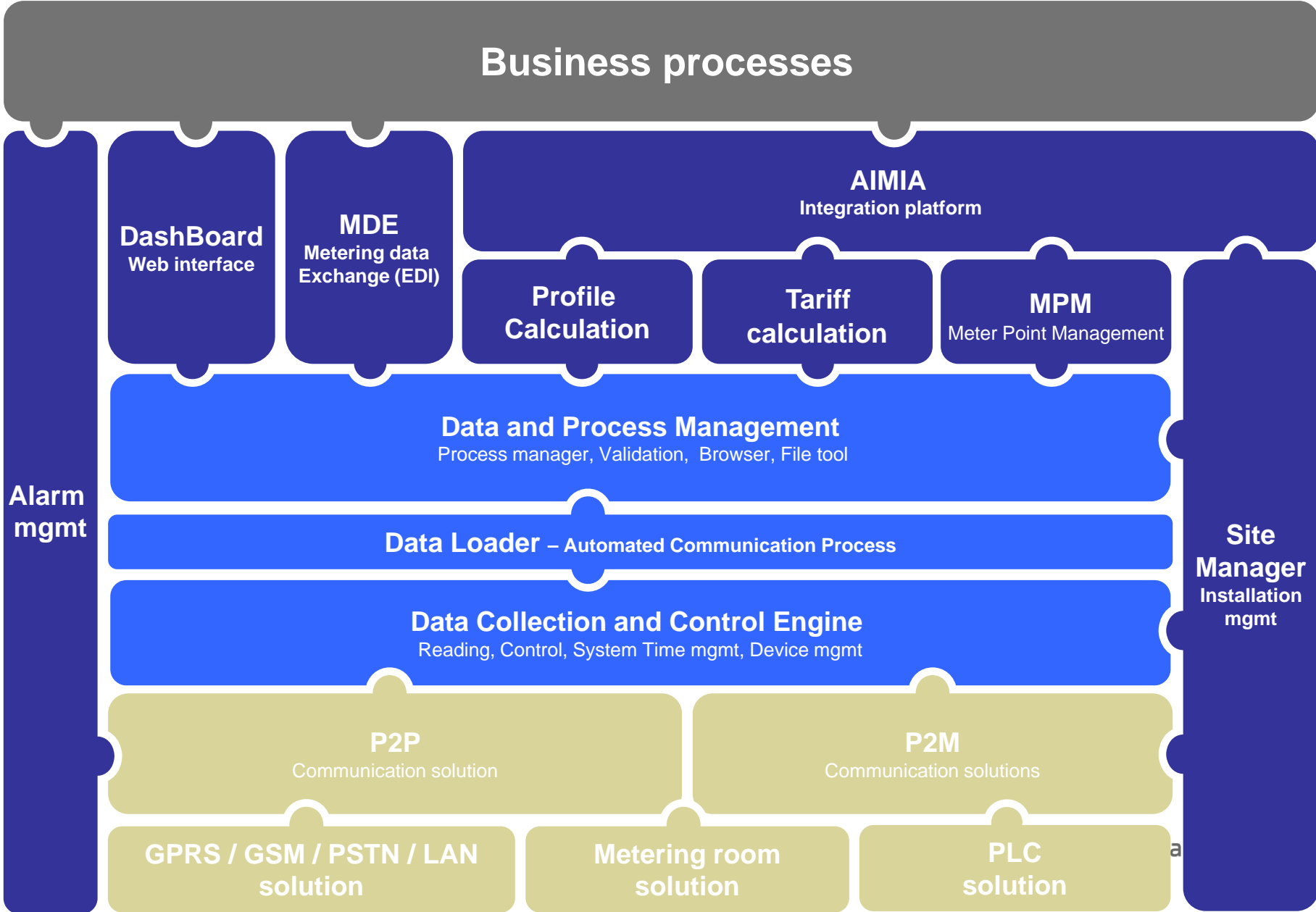
Effective communication

Versatile communication offering for ensuring cost effective solution for every end customer segment.

World-class meters

Full range of meters for every end customer segment covering all metering business requirements.

AIM applications serving business processes



Unique functionality of AIM Advanced Metering Solution

- + System applications for data collection and load control (Advanced AMR)
 - Scheduled readings, direct readings, re-reading, monitoring of reading jobs
 - Advanced group handling for various reading purposes
 - Versatile controls
 - Widest range of communication medias ensures optimum life-time cost
- + System applications for data management (AMM)
 - Validation, tariff calculation, profile calculation, Power quality information
- + System integration platform (AIMIA)
 - Two way interoperable system interfaces
- + Workflow concept for combining processes into automatic, seamless information flows
- + Unique DataMax architecture for unlimited system scalability
- + System applications for automatic metering information (AIM Dashboard)
 - Customer Service, Managerial reporting
- + Tools for deployment and maintenance work management (AIM Site Manager)

Unlimited scalability through revolutionary DataMax architecture

- Unlimited scalability by splitting processing to multiple AMR
- Possibility for separate deployment environment
- Possibility for regional AMR's
- Possibility for dedicated AMR's for different usage (for ex. DH and electricity customers in separate AMR's)
- Possibility for dedicated AMR for different communication technologies
- Possibility to integrate to third party AMR engines
- Single access point to all data

AIM Integration Application (AIMIA)

- + Unique integration platform for connecting Enermet AMM system to energy company's other IT systems
 - Seamless two-way integration for key system functions
 - Standardized interfacing technologies, such as SQL, XML, Web services
 - Fast adaptation to different external systems
- + Successfully implemented in many customer cases
- + Enables development of optimal processes and guarantees full benefit of system investment

Enermet AIM Advanced Metering system is a fully integrated and operational part of the customer's business critical processes ensuring reliability and effectiveness

AIM Site Manager

- + Tools for automatic installation work flow and information management
- + Minimises the installation costs and secures the efficient resource allocation
- + Minimises the need for manual tasks
- + Minimises the need for revisits
- + Automatic and secure installation value chain
- + Secure information management during the process
- + Flexible to adapt to meet local requirements and working methods
- + Secure and reliable installation information exchange between Advanced AMR and other systems



PDAService 8:24

[<< Work Lists](#)
[Alternative view](#)

2005-02-23
Another example of a work list
JMY

Work code	Metering point	Test
Example2 completed	100056 Testikatu 10056 40420 Jyskä	Read
Example2 not-started	100053 Testikatu 10053 40420 Jyskä	

View Tools

AIM Dashboard

Superior Tool for Customer Service and Management

- + Handy customer service tool for searching, viewing and controlling customer's metering and other information
 - Centralising daily routines of metering point controlling to customer service
- + Easy tool for energy company management for an at-a-glance view of product sales summaries in graphical format
 - Refining mass data into clear reports



Cost effective Communication and Smart Devices

Intelligent communication

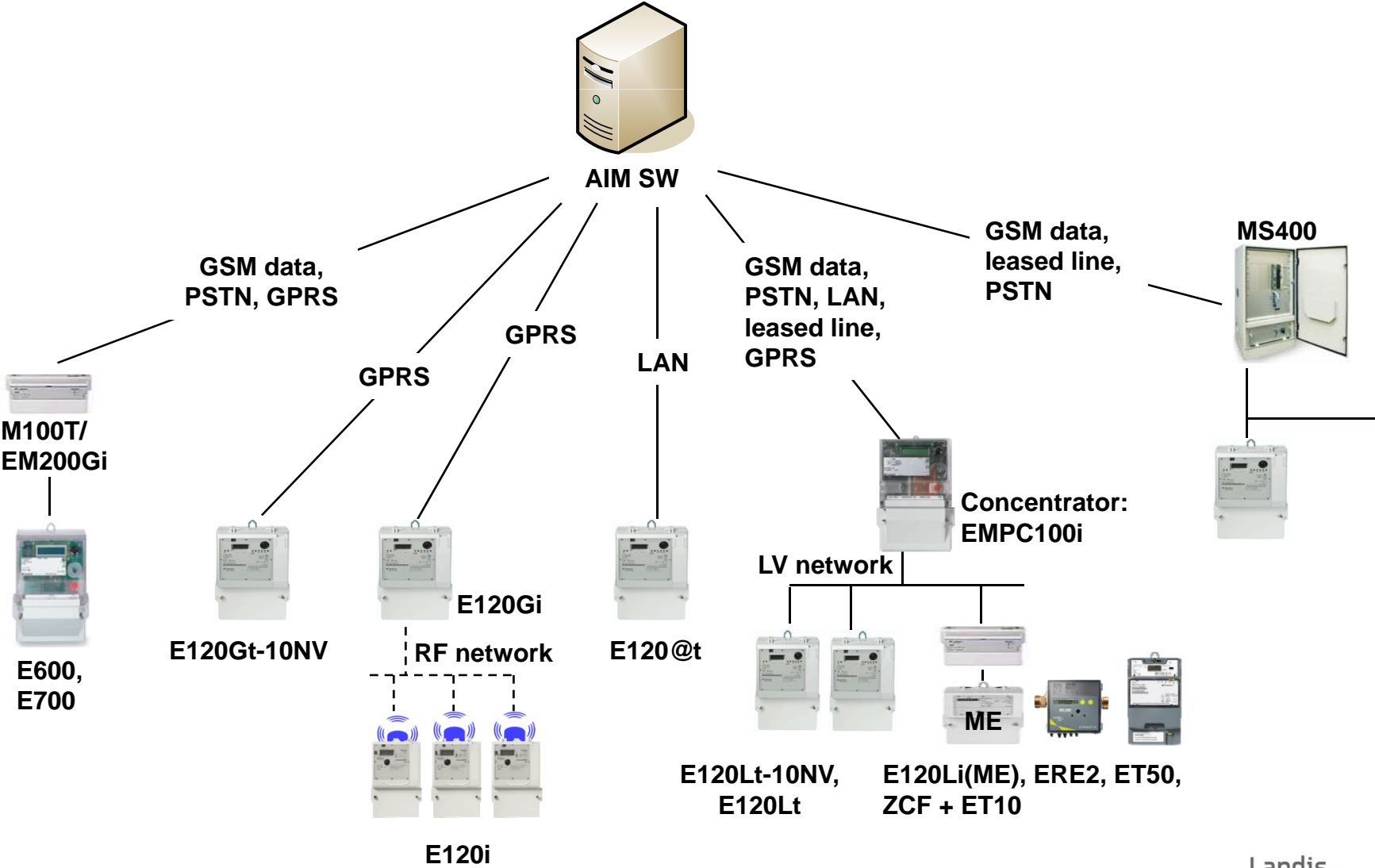
- + Wide variety of communication options to ensure 100% coverage and cost effectiveness for every end-user segment.
- + Flexible IP based communication for use with GSM, GPRS, LAN, WAN, ...
- + Intelligent PLC concentrator for increasing system communication capacity and functionality

Industry-leading metering devices

- + Reliable and cost effective smart E120 family AMR meters and terminals for all purposes.
 - Versatile data: re-configurable tariffs + profiles
 - Versatile controls: disconnect/reconnect, load management
 - Versatile quality data: delivery quality, network monitoring
- + Multi Energy solutions (E120LiME and ET50)



Comprehensive Device And Communication Portfolio



Extensive Service Offering

