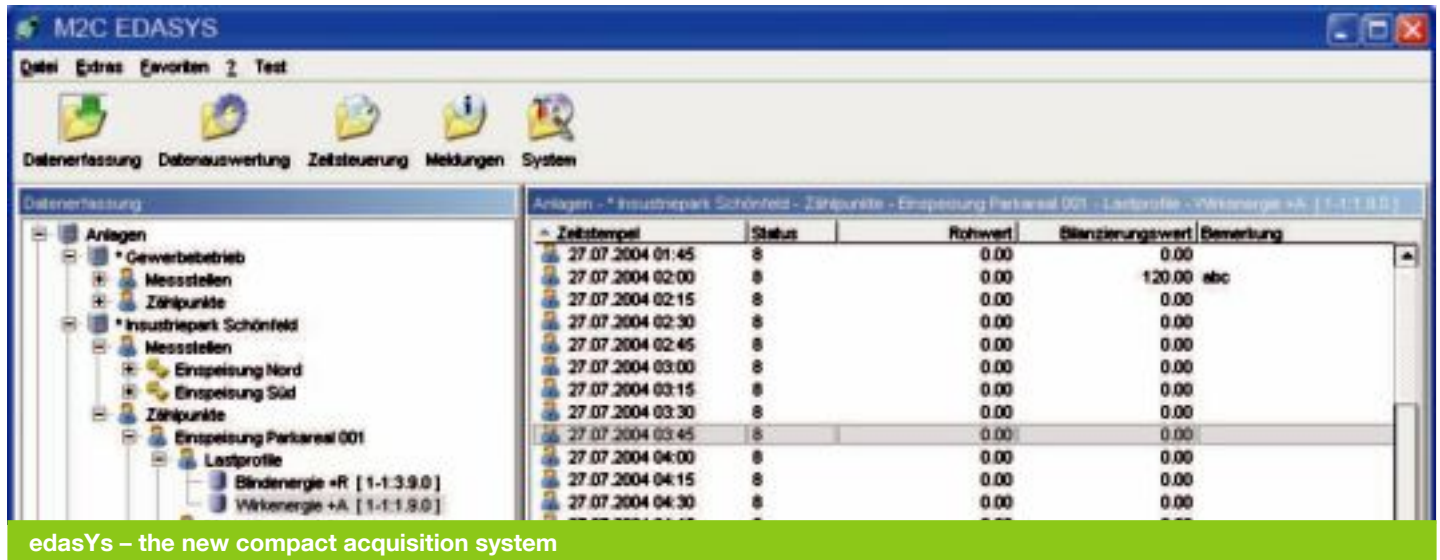


Technical Data Sheet

edasYs V1.1



edasYs – the new compact acquisition system

System architecture

- Modern Java-application and an easy manageable, graphical user interface (GUI)
- Client/Server architecture with automatic update function of the client software
- The user is able to work ideally with edasYs over the Java-Thin-Client
- Operating system for edasYs: MS Windows 2003 Server or MS Windows XP
- MS Office Package (Excel) for the reporting function
- Professional database for an efficient work with edasYs

Administration

- Secured user access (user name and password)
- Separate access rights for users and administrators
- Possibility of a regular data backup
- Logging of all activities in the system logbook
- Administration of the measurement categories for the accounting and the load profile data
- Administration of the system configuration
- Modem management
- Template management

Data acquisition

- Meter protocols DLMS, SCTM, IEC1107, VDEW, M-Bus
- Communication media: PSTN, GSM, leased line, Ethernet (TCP/IP network), ISDN, GPRS, serial (local), Internet
- Backup-communication line for a better availability
- Data acquisition methods: manual, scheduled, re-acquisition
- Effective processing of concurrent acquisition jobs (parallelisation)
- Analysis-tool to the supervision of the acquisition
- Data acquisition over handheld terminals (MDE2, emergency readout)
- Graphical presentation of load profiles with a variety of possible settings

Control and processing

- Administration of active and in-active requests
- Any number of time-staggered jobs
- Control of the acquisition, the reporting, the transfer to 3rd party systems (e.g. accounting system) and of the system backup
- Creation of reports in various data formats
- Distribution of the reports by e-mail, printer or by saving in a file
- Time control of any 3rd party software, script- or batch files
- Automatic generation of error acquisition jobs including the entry of not acquired metering points and the possibility of immediate re-acquisition

System requirements

Hardware	Pentium PC, 2 GHz, 1 GB, 40 GB HD, CD/DVD drive, net-work access, 17" screen, key-board, mouse. For remote support: ISDN-modem or RAS-access
Operating system	MS Windows XP or MS Windows 2003 Server
3rd party software	MS Office XP / 2000 (Reporting) NetOp (remote support software)
Communication media	Modems have to be provided depending on the communication path and the metering-/RTU devices (e.g. Multitech MT5600ZDXe or FKJ for V23 uses)

Tariff module

- Free definition of tariff rates (HT, LT, ST, ...)
- Definition of all special days and holidays (both recurring and non-recurring)
- Free configuration of daily tariff schedules
- Assignment of daily tariff schedules to the tariff calendar
- Free compilation of tariff agreements
- The assigned tariffs are available in both the graphic module and the data list or in the reports
- Changes in the tariffs can also be assigned retrospectively

Data interfaces

- Export of load profile and billing data to third-party systems
- Data export via formatted text files
- Individual adaptations are possible at any time
- The required data is compiled in metering point lists
- Scheduled file creation

Complementary products

www100, Internet Portal

Internet Metering (GPRS): iMEGA

MDE2 Handheld-solution

Converge, AMR system

Landis+Gyr AG

Feldstrasse 1
6301 Zug
Switzerland

Phone +41 41 935 6000
Fax +41 41 935 6601
info@landisgyr.com
www.landisgyr.com/europe