

Electricity Meters / IEC / DIN / BS

RESIDENTIAL

Landis+Gyr Long Life CM100 and MM2000 Ferraris Meters

RELIABLE AND COST-EFFECTIVE - TODAY AND IN THE FUTURE

Landis
| Gyr⁺





RESIDENTIAL

Landis+Gyr Long Life CM100 and MM2000 Ferraris Meters

RELIABLE AND COST-EFFECTIVE - BEST-IN-CLASS - TODAY AND IN THE FUTURE

Both reliable and cost-effective, with an outstanding long life-cycle performance for residential application.

These are the qualities you will find in our present generation of residential meters.

FUNCTIONALITY

	Landis+Gyr Ferraris
FEATURES	Steplessly variable adjustment mechanisms
	Constant minimum friction
	Constant braking force
	Low starting current
	Low power consumption
	High torque
	High resistance to short circuits
	High resistance to surge voltages (> 8kV)
	Operating temperature from -25°C to +75°C
	Low temperature coefficient
	High dielectric strength
	Protection class according to IEC 60529: IP 53
	Long life expectancy (> 30 years)
	Maintenance free
	Fulfil requirements IEC 62052-11 and 62053-11
	EU and OFGEM approved
	Excellent price/performance ratio
	High stability

Landis+Gyr CM100 single-phase meters according to DIN and BS standards with direct connections for active energy applications.

Landis+Gyr MM2000 Polyphase meters according to DIN standards with direct and transformer-connections for active and reactive energy applications.

BASIC ELECTRICAL DATA FOR CM 100 SINGLE-PHASE, TWO WIRE METERS

	Landis+Gyr Ferraris	DIN Housing	SymCon Housing BS-Standard
		Normal connection	Symmetrical connection
CURRENT IN A	5 (20)	■	■
$I_b (I_{max})$	5 (30)		
	5 (40)	■	
	10 (40)	■	■
	10 (60)	■	■
	15 (60)	■	■
	15 (100)		■
	20 (80)		■
	25 (100)		■
VOLTAGE	120, 127, 220, 230 and 240 V	■ ■ ■	■ ■ ■ ■ ■
FREQUENCY	50 or 60 Hz	■ ■ ■	■ ■ ■ ■ ■
CLASS ACCURACY	Class 2.0	■ ■ ■	■ ■ ■ ■ ■
POWER CONSUMPTION AT 50 HZ	Voltage Circuit 1.0 W / 3.8 VA	■ ■ ■	■ ■ ■ ■ ■
	Voltage Circuit 1.2 W / 5 VA		■ ■ ■ ■ ■
	Current Circuit 0.1-0.3 W / 0.15-0.35 VA	■ ■ ■	■ ■ ■ ■ ■
TEST VOLTAGE	4 kV at 50 Hz, 1 min	■ ■ ■	■ ■ ■ ■ ■
RESISTANCE TO SURGE VOLTAGE	> 8 kV at 1.2/50 μ s	■ ■ ■	■ ■ ■ ■ ■
WEIGHT	Approx. 1.4 - 1.6 kg for a single-tariff execution	■ ■ ■	■ ■ ■ ■ ■
		CM140/143 CM160/165 CM180	CM140/143 CM170 CM140/143 CM160/165 CM170

BASIC ELECTRICAL DATA FOR MM2000 THREE-PHASE, THREE AND FOUR-WIRE METERS

		Landis+Gyr Ferraris							
CURRENT IN A I_b (I_{max})	5 (20)	■	■						
	5 (30)					■	■		
	5 (40)							■	
	10 (40)	■	■						
	10 (60)					■	■		
	20 (80)	■	■						
	20 (100)			■	■				
	20 (120)					■	■		
	1/6					■	■		
	1.5/6								■
VOLTAGE 3P: 3P+0	3x220 V, 3x380 V, 3x400 V, 3x415 V	■	■	■	■	■	■	■	■
	3x127/220 V, 3x133/230 V, 3x220/380 V,	■	■	■	■	■	■	■	■
	3x230/400 V, 3x240/415 V	■	■	■	■	■	■	■	■
FREQUENCY	50 or 60 Hz	■	■	■	■	■	■	■	■
CLASS ACCURACY	Class 1.0								■
	Class 2.0	■		■		■		■	
	Class 3.0, reactive version R1		■		■		■		■
POWER CONSUMPTION AT 50 HZ	Voltage Circuit 1.0 W /4.5 VA	■	■	■	■	■	■	■	■
	Current Circuit 0.1-0.2 W / 0.1-0.2 VA	■	■	■	■	■	■	■	■
TEST VOLTAGE	4 kV at 50 Hz, 1 min	■	■	■	■	■	■	■	■
RESISTANCE TO SURGE VOLTAGE	> 8 kV at 1.2/50 μ s	■	■	■	■	■	■	■	■
WEIGHT	Approx. 3.2 - 3.7 kg for a single-tariff execution	■	■	■	■	■	■	■	■
		MM2400	MM2400R1	MM2500	MM2500R1	MM2600	MM2600R1	MM2800	MM2460

BASIC MECHANICAL DATA FOR CM100 AND MM2000 METERS

TARIFF DEVICES	Single or two-rate registers, optional: unidirectional (only CM100)		
SIZE OF FIGURES	4.6 x 2.5 mm (larger figures on request)		
LOWER BEARING	Double-jewel or magnetic		
METER FRAME DESIGN	Anticorrosive steel plate		
STOPPING DEVICE	Stop holes in rotor disc or stop wire with vane		
BRAKE MAGNET	high coercive material		
METER BASE	CM -60A	DIN	Terminal bore \varnothing 7.2 mm
	CM -100A	SymCon	Terminal bore \varnothing 9.3 mm
	MM -60A	DIN	Terminal bore \varnothing 7.2 mm
	MM 60-120A	High Current	Terminal bore \varnothing 9.3 mm
	MM Transformer-connected		Terminal bore \varnothing 5.2 mm
METER COVER	Black thermo-setting material or transparent thermoplastic material		
TERMINAL COVER	Short or extended		
REVERSE-RUNNING STOP	Optional, type suffix "h"		
PULSING DEVICE S0*	Optional, type suffix "r11.6" (only for MM2000 meters)		
VOLTAGE OUTAGE INDICATOR	Optional, type suffix "w"		

*acc. DIN 43 864 and IEC 62053 - 31 C1. A

Landis+Gyr Long Life CM100 and MM2000 Ferraris Meters

A BROAD PRODUCT RANGE COVERING YOUR RESIDENTIAL REQUIREMENTS

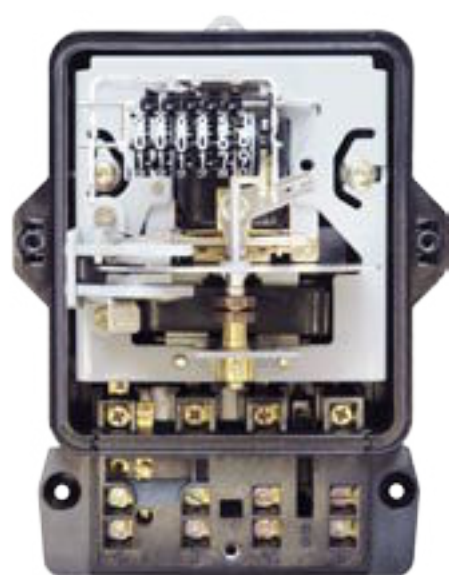
Precision, reliability, durability and cost-effectiveness over the entire life cycle - those are the essential requirements for meters used for residential applications.

Our meters fulfil the requirements for both DIN and British Standard applications.

The measurement of active energy complies with Class 2, but the MM2000 meter is also available as Class 1.



CM143d / DIN Standard
Normal connection



CM170 / British Standard
Symmetrical Connection
SymCon-Housing

THE RELIABLE, MAINTENANCE-FREE FERRARIS METERS FOR SINGLE AND TWO-RATE TARIFF



MM2400 / single tarif



MM2600 / two-rate tarif

ADDITIONAL BENEFITS

Concentration on essentials and the use of proven technologies are the minimum requirements that we place on our own products as the world's leading manufacturer of electricity meters. Add to that the very high quality demands on the materials and technologies we employ. These are the prerequisites for accurate, reliable and cost-optimised metering for your residential customers. Additionally, we abide by fundamental ecological principles - from production to disposal. So you can be sure of making the right investment both for the present and for the future.

Over 100 years of expertise in this field is our guarantee for your satisfaction.

Landis+Gyr

DEFINING «MEANS OF PRECISION»

Outstanding features, reliability and durability as the basis for enhanced customer process efficiency. This is our commitment.

Continuously bearing in mind economic and ecological requirements to your advantage: optimal life-cycle costs as well as safe recycling.

We set the standards in energy consumption metering. That has been our passion since 1896, and will remain so in the future.

Landis+Gyr AG
Feldstrasse 1
6301 Zug
Switzerland
phone:
+41 41 935 6000

www.landisgyr.com

H 71 0200 0304 en b
© Landis+Gyr AG / 06.03 0,3 Ah
Subject to changes

