

Electricity Meters / IEC

# INDUSTRIAL + COMMERCIAL

Landis+Gyr Dialog

## INVESTMENT PROTECTION THROUGH FLEXIBLE MODULARITY

Landis+  
Gyr<sup>+</sup>



# INDUSTRIAL + COMMERCIAL



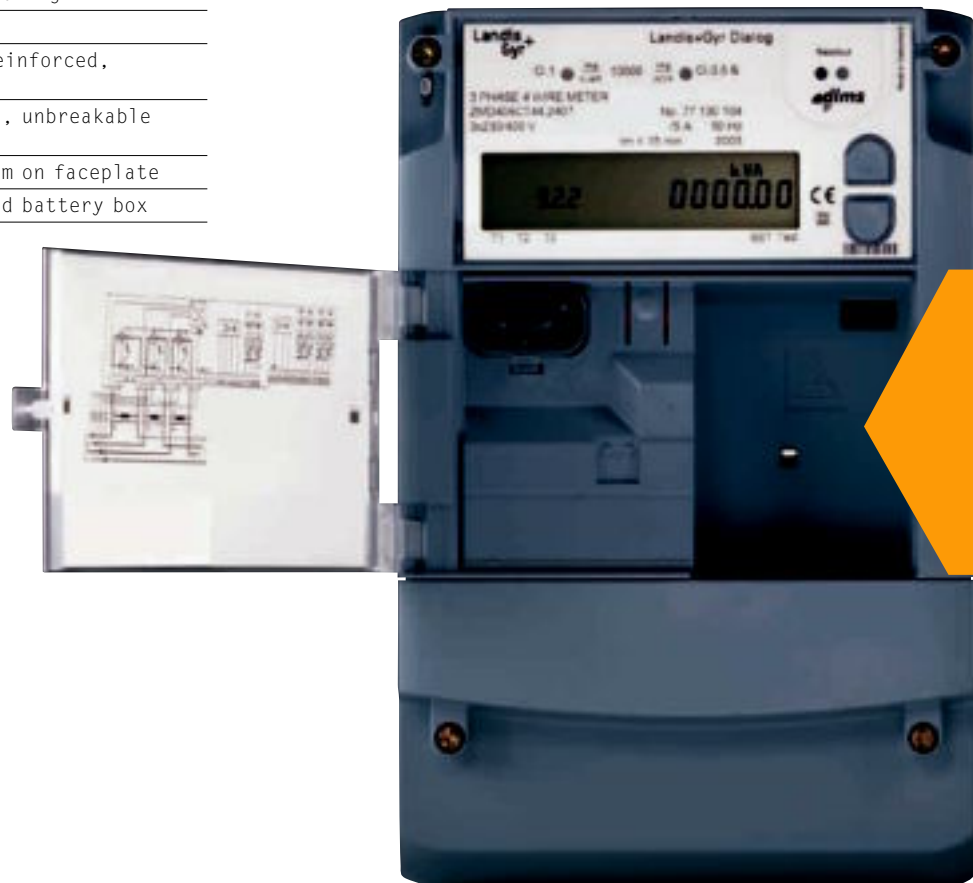
# INVESTMENT PROTECTION THROUGH FLEXIBLE MODULARITY

No-one can tell what your competition will require of you tomorrow. That is why you want a safe investment for the future and a maximum of flexibility for the greatest investment protection: comprehensive functionality, unique modularity, and smart interoperability within a meter family.

## BASIC FUNCTIONALITY

Landis+Gyr Dialog	
<b>ELECTRONICS</b>	Wide-voltage power supply Large LCD display Up and down buttons for display Optical button for the display Utility sealed reset button Optical interface (IEC 62056) Optical test output Three control inputs Two output contacts
<b>RECORDING</b>	8 measurement channels with total register 24 energy registers Stored values register 9 operating time registers Event log
<b>FUNCTIONS</b>	Installation support on display Set mode via buttons Real-time clock with power reserve Instantaneous voltage values Voltage monitoring
<b>HOUSING</b>	Glass fiber reinforced, antistatic Crystal clear, unbreakable windows Wiring diagram on faceplate Utility sealed battery box

Quality and Safety: The extensive basic functionality already meets all major IEC standards applicable to the respective requirements.



Landis+Gyr Dialog

## COMPLETE BASIC FUNCTIONALITY PLUS MODULARITY: «PLUG+PLAY»

This meets your needs for today while leaving you a free hand for tomorrow. You decide when to equip your meters with what technology to give them the communication capabilities you and your customers need.

Outstanding wide-range measurement, comprehensive functionality, optimal operating and installation tools, as well as maximum reliability are a matter of course.

### COMMUNICATION

Only reliable, total availability of precise metering data provides the prerequisites for an efficient billing process. That is how the Dialog family gets its name, because each of our meters is «bilingual»: handling the established IEC1107 protocol as well as the new, future-assured DLMS™, both of which comply with the IEC62056 standard.

An optimal data flow is assured by the **built-in communication interface** or by readily **interchangeable communication units**. That gives you flexibility, and safeguards against misinvestments.





## + ADDITIONAL FUNCTIONALITY

	Landis+Gyr Dialog
TARIFF FUNCTIONS	Average demand Time-of-use (TOU) tables Programmable matrix-based mixed control
MEASURED QUANTITIES	Power factor Instantaneous values for current phase angle frequency power factor
RECORDING	24 demand registers 2 power factor registers 14-channel profile memory
SPECIAL FUNCTIONS	Monitors for demand current power factor Backlit display
EXTENSION BOARDS (only one possible)	4 control inputs + 2 output contacts 2 control inputs + 4 output contacts 6 output contacts RCR161 ripple-control receiver RCR161 + 4 output contacts Additional power supply + 2 output contacts

## + SOFTWARE TOOLS

	Landis+Gyr MAP
MAP 120	Parameterization Primary data adaption Communications settings
MAP 110	Installation support Meter data readout Load profile analysis DIP table visualisation Security system visualisation

## ADDITIONAL BENEFITS

Added value means: The broad selection of measured quantities can be utilized via special registers. Evaluation of threshold value overshoots and undershoots provides for comprehensive analysis and control of loads and tariffs. Operational irregularities are detected, and can be logged.

Enhanced operating and installation tools reduce user errors, and simplify installation and service.

In addition: alarms for new service and maintenance possibilities; optional additional power supply for remote meter reading when the measuring-circuit voltage is off; MAP service tools for adaptation of standard functions, such as time-of-use tables, billing lists, profile memory or pulse outputs, and for remote parameter modification.

Landis+Gyr

# DEFINING «MEANS OF PRECISION»

Outstanding solutions with persuasive intelligence, reliability and durability as the basis for enhanced customer process efficiency. This is our commitment. Continuously bearing in mind economic and ecological requirements to your advantage: optimal life cycle costs as well as safe recycling.

We set the standards in energy consumption metering. That has been our passion since 1896, and will remain so in the future.

Landis+Gyr AG  
Feldstrasse 1  
6301 Zug  
Switzerland  
phone:  
+41 41 935 6000

[www.landisgyr.com](http://www.landisgyr.com)

H 71 0200 0275 en  
© Landis+Gyr AG / 04.10 1 Zu  
Subject to technical changes

